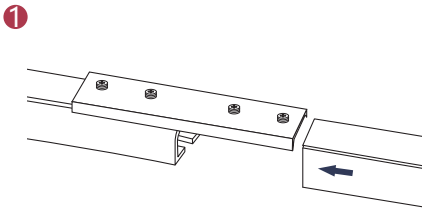
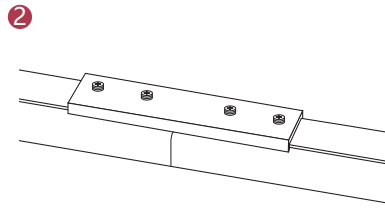


Curtarra Custom Curtain Track Installation Instruction

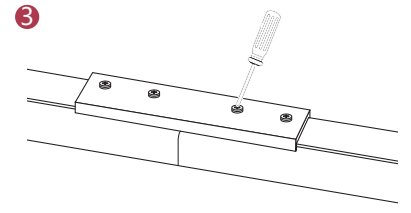
Connect



Insert the connector above the curtain track.

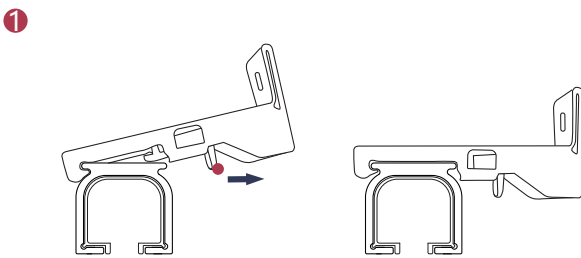


Combine the two curtain tracks to ensure there is no gap.

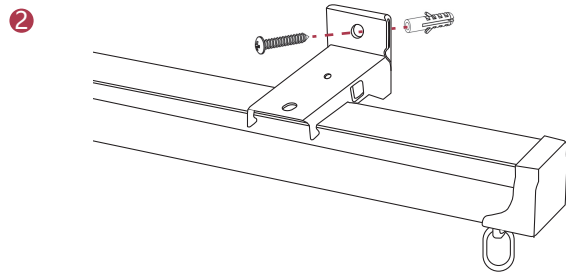


Tighten the screws with a screwdriver.

Wall Mounted

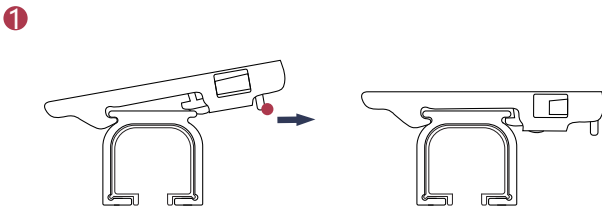


Attach the holding brackets to the curtain track.

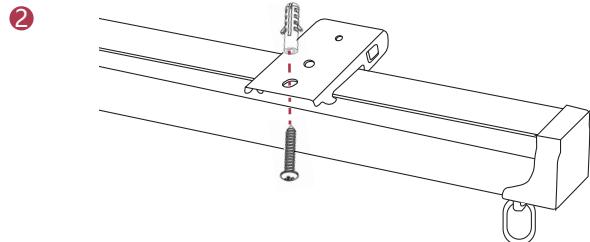


Secure with screws to ensure the track works.

Ceiling Mounted



Attach the holding brackets to the curtain track.



Secure with screws to ensure the track works.